

## GERSTEL AppNote 145

# Qualitative Analysis of a Finished Personal Care Product using the GERSTEL MultiPurpose Sampler MPS configured with Multiple Sample Introduction Techniques

Jaqueline A. Whitecavage and John R. Stuff

GERSTEL, Inc., 701 Digital Drive, Suite J, Linthicum, MD 21090, USA

## Keywords

LabWorks Platform, thermal desorption, gas chromatography, mass spectrometry, dynamic headspace, Stir Bar Sorptive Extraction (SBSE), Twister, pyrolysis

## Abstract

This study shows the analysis of a commercially available personal care product using the GERSTEL LabWorks Platform configured with Dynamic Headspace (DHS) and pyrolysis (PYRO) modules and combined with an Agilent GC/MS system. Information regarding product composition can be obtained from the chromatographic profiles obtained from one analysis system using a variety of sample introduction techniques.

## Introduction

The GERSTEL MultiPurpose Sampler (MPS) in combination with the GERSTEL Thermal Desorption Unit (TDU) and a programmable temperature vaporizer (PTV) inlet, the GERSTEL CIS 4, pro-

vides the user with a multitude of analytical options to utilize for sample analysis. When combining the MPS with just the CIS 4 inlet, the available techniques include: Liquid and large volume injection (LVI), solid phase micro-extraction (SPME), and static headspace (HS) analysis. When the TDU is used, the list is expanded to include thermal desorption, thermal extraction, and Stir Bar Sorptive Extraction (SBSE) using the GERSTEL Twister™. Other available options include Dynamic Headspace (DHS) and a pyrolysis module, the GERSTEL PYRO. Interchanging the modes of operation of the LabWorks Platform requires minimal effort, which means that the analyst can take full advantage of the information each technique has to offer when analyzing a particular sample. In addition, the quick change between analysis techniques makes it easier to adapt to changing requirements in the laboratory.

This study describes the use of the GERSTEL LabWorks Platform with DHS and PYRO for the analysis of a finished personal care product. The product used for this study was a hair heat defense mist.

## GERSTEL AppNote 145

## Experimental

*Instrumentation*

Analyses were performed using the GERSTEL LabWorks Platform with dynamic headspace (DHS) and automated pyrolysis (TDU Pyro) on an Agilent 7890 GC equipped with a 5975C Inert XL MSD with triple axis detector. The equipment is shown in the figure below.



**Figure 1:** LabWorks Platform with GC/MS system used for automation of all sample introduction techniques.

*Analysis Conditions LabWorks Platform**Pyrolysis*

Time	Lead: 0.1 min Follow up: 0.5 min Initial: 0.15 min
Init. Temp.	350 °C
Rate	350, 500, or 650 °C/s
Final Temp.	350, 500, or 650 °C
TDU	splitless 40 °C (0 min); 720 °C/min to 250 °C (0.75 min)
CIS	solvent vent (50 mL/min) split 100:1 -120 °C; 12 °C/s to 280 °C (3 min)

*Thermal Extraction*

TDU	splitless 40 °C (5 min)
CIS	solvent vent (50 mL/min) split 30:1 -120 °C; 12 °C/s to 280 °C (3 min)

*Twister*

TDU	splitless 40 °C (0 min); 720 °C/min to 280 °C (3 min)
CIS	solvent vent (50 mL/min) split 30:1 -120 °C; 12 °C/s to 280 °C (3 min)

*Dynamic Headspace*

Trap	Tenax TA 25 °C trap temperature 110 °C incubation temperature (2 min) 300 mL purge volume 50 mL/min purge flow 10 mL dry volume 5 mL/min dry flow
TDU	solvent venting 50 °C (3 min); 720 °C/min to 280 °C (3 min)
CIS	solvent vent (50 mL/min) split 30:1 -120 °C; 12 °C/s to 280 °C (3 min)

*Analysis Conditions GC Agilent 7890*

Column	30 m Rxi-5Sil (Restek) $d_i = 0.25 \text{ mm}$ $d_f = 0.25 \mu\text{m}$
Pneumatics	He, constant flow = 1.0 mL/min
Oven	40 °C (1 min); 10 °C/min to 300 °C (3 min)
MSD	Scan, 50 - 500 amu

*Analysis Conditions MS Agilent 5975C*

MSD	Scan, 50 - 500 amu
-----	--------------------

## GERSTEL AppNote 145

### *Sample Preparation*

#### *Pyrolysis*

One to three milligrams of sample were weighed into a short, quartz test-tube-shaped pyrolysis vessel. The quartz tubes used were connected to TDU pyrolysis transport adapters and placed into a 98 position pyrolysis tray.

#### *Direct Thermal Extraction*

A 17 mg sample was weighed into a TDU micro-vial. The micro-vial was placed in an empty TDU tube, which was capped with a transport adapter and placed into a 98 position VT-98t tray.

#### *Dynamic Headspace Analysis*

A 17 mg sample was weighed into a 20 mL screw cap vial, which was then capped and placed into a VT-32-20 tray.

#### *Twister*

A 60 mg sample was weighed into a 10 mL screw cap vial. The sample was diluted with 10 mL of bottled water. A Twister™ stir bar was placed in the vial, which was then capped. The sample was extracted for 1 hour at a speed of 1200 rpm. After extraction, the Twister was removed from the sample, rinsed with water, dried, and placed in an empty TDU tube. The TDU tube was capped with a transport adapter and placed into a 98 position VT-98t tray.

#### *Headspace Sorptive Extraction (HSSE)*

A 60 mg sample was weighed into a 20 mL crimp cap vial. An HSSE insert with a Twister was placed in the vial and the vial was capped. The sample was extracted for 1 hour at 40 °C at an agitator speed of 500 rpm in the MPS agitator. After extraction, the vial was de-capped, and the Twister was removed from the sample and placed in an empty TDU tube. The tube was capped with a transport adapter and placed into a 98 position VT-98t tray.

### Results and Discussion

#### *Pyrolysis*

The PYRO pyrolysis module for the TDU is an option that enables automated pyrolysis in combination with the GERSTEL MPS. Samples can be heated to user-selectable temperatures up to 1000 °C. Pyrolysis GC/MS can provide information regarding polymers, additives, and other compounds contained in the sample.

In figure 2, three pyrograms obtained after pyrolysis at 350, 600, and 750 °C respectively of the hair mist sample are shown. The pyrogram obtained at the lowest temperature shows siloxanes and other compounds, most likely associated with the fragrance used in the product. At 750 °C, secondary pyrolysis products, such as benzene, toluene, styrene, indene, and naphthalene are formed, indicating that the pyrolysis temperature is too high. The best pyrolysis temperature, of the three utilized for this sample, is 600 °C.

In the resulting pyrogram, 1-vinyl-2-pyrrolidinone and 2-pyrrolidinone are seen from the VA/VP copolymer listed as one of the ingredients in this product. Siloxanes which dominate the pyrogram are produced from several of the listed ingredients including Dimethiconol, Dimethiconol/Silsequioxone copolymer, and PEG/PPG-20/15 Dimethicone. Extracted Ion Chromatograms at  $m/z = 45$  amu show a series of ethoxyethanol peaks, which indicate the presence of polyethylene glycol in the formulation. The peak shape for these compounds could be enhanced by performing derivatization pyrolysis GC/MS. A series of C6-C10 alkane/alkene pairs were also observed in this study.

## GERSTEL AppNote 145

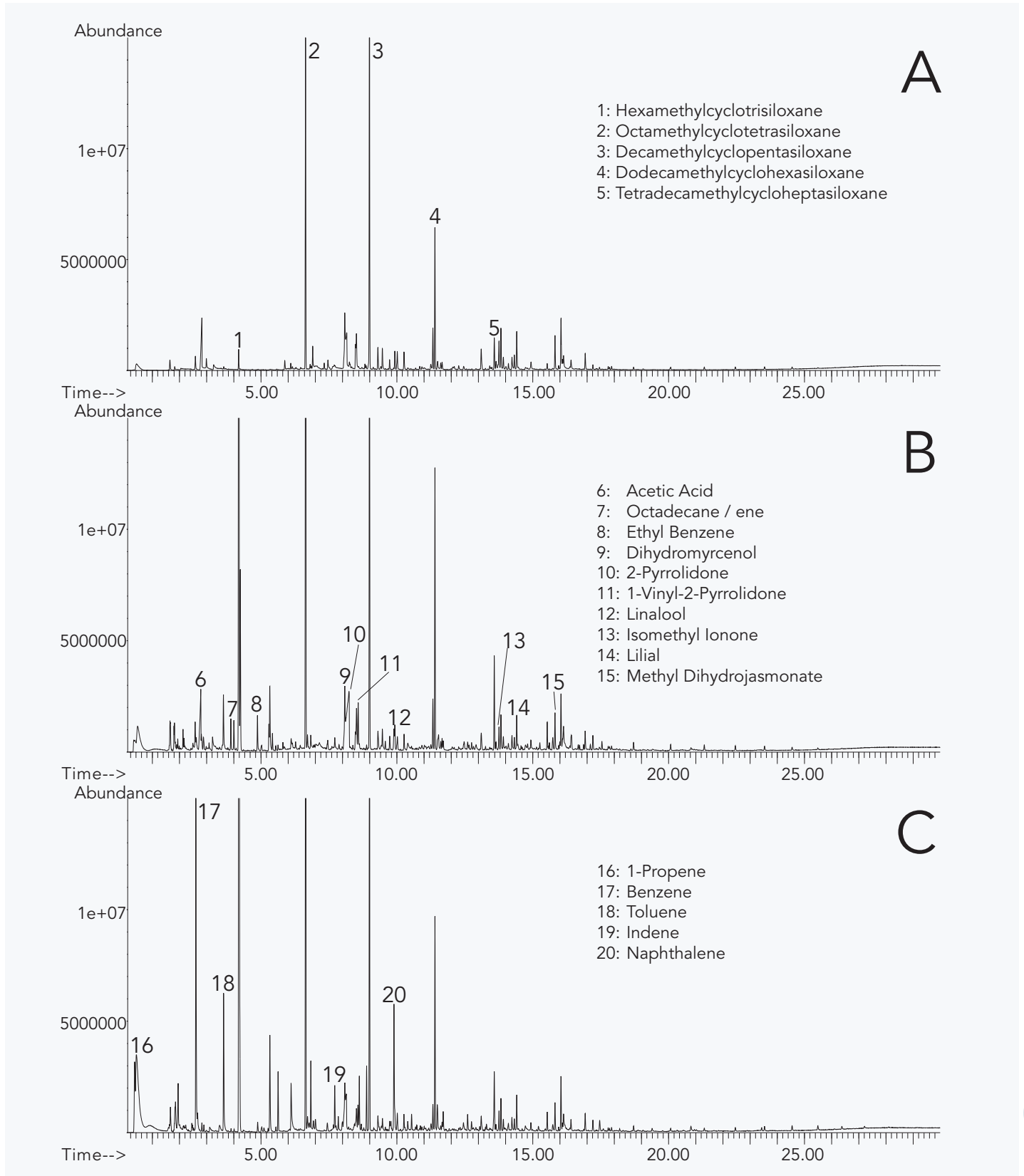


Figure 2: Stacked view of pyrograms resulting from pyrolysis at 350 (A), 600 (B), and 750 °C (C).

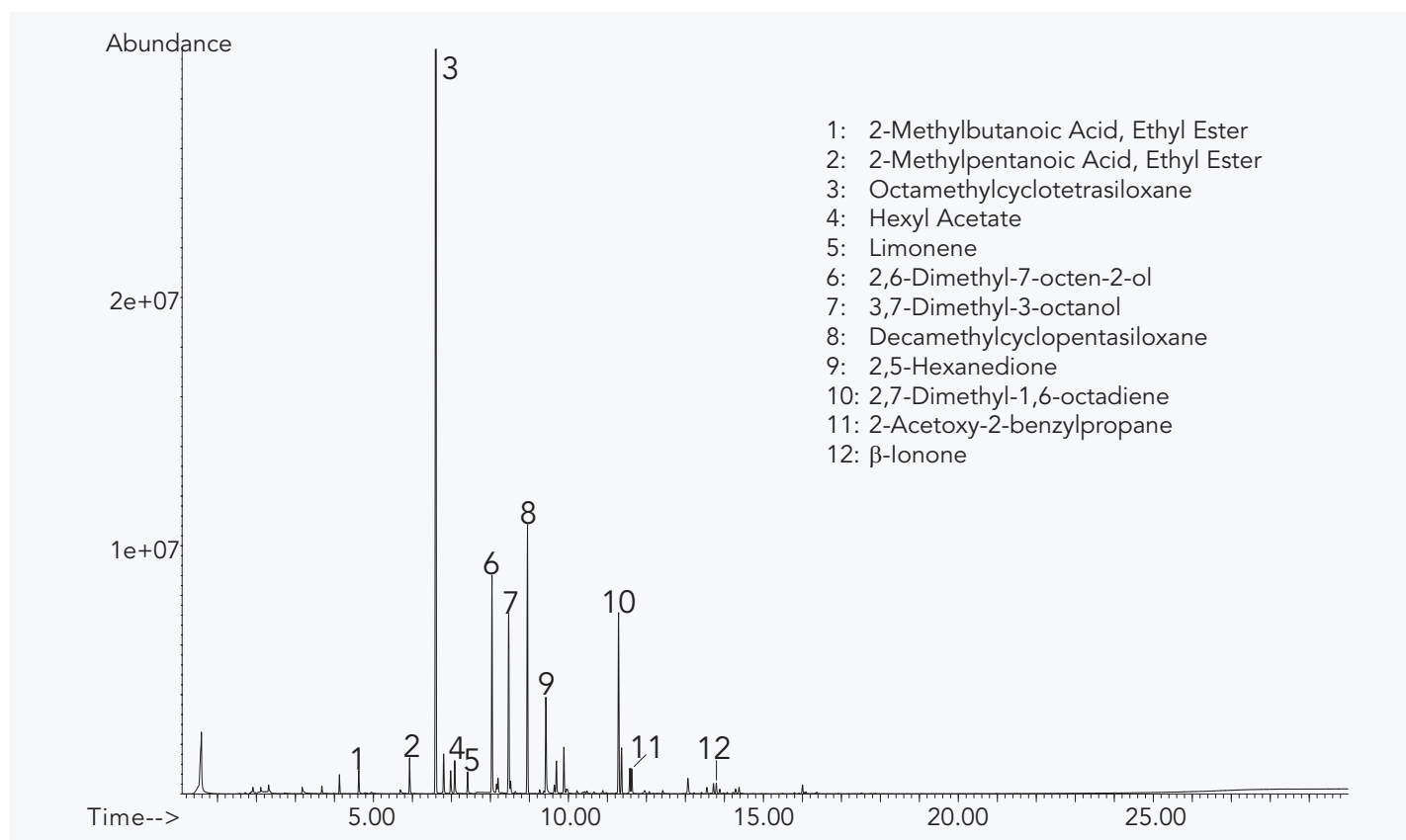
## GERSTEL AppNote 145

### Direct Thermal Extraction

Direct thermal extraction of solid or liquid samples can easily be accomplished with the TDU. Sample sizes typically range from 10-50 mg. Liquid or solid samples can be loaded into TDU  $\mu$ -vials, which are typically used as disposable sample containers. The  $\mu$ -vials have a volume of 250  $\mu$ L. Solid samples can also be placed in fritted TDU tubes, enabling the analysis of larger sample amounts. Samples can be heated up to 350 °C in the TDU.

For this study, approximately 17 mg of sample was weighed into a micro-vial. The sample was extracted at 40 °C for 5 minutes with

a flow of 50 mL/min across the tube. Analytes were trapped in the CIS 4 inlet at -120 °C in a liner packed with quartz wool. A low extraction temperature was used to avoid driving too much water into the inlet since this could cause freezing. In figure 3, the resulting chromatogram is shown. This approach yields a fairly clean chromatographic profile of the volatiles given off from the sample without too much interference. Octamethylcyclotetrasiloxane is the largest peak. Given the low temperature used for the extraction, it is reasonable to assume that this compound is present in the formulation and is not just a product of pyrolysis, as indicated above.



**Figure 3:** Total ion chromatogram resulting from direct thermal extraction.

### Twister HSSE

Headspace sorptive extraction (HSSE) is a technique used for the analysis of volatiles above a solid or liquid sample in a closed container. A Twister is suspended above the sample. The temperature, time and agitator speed used for the extraction can be varied. One advantage of this technique over headspace SPME is the higher capacity of the Twister stir bar, which typically results in increased sensitivity.

For this study, approximately 60 mg of sample was placed in a 20 mL vial. A Twister was suspended in the headspace above the sample for 60 minutes at 40 °C in the MPS agitator with the agitator speed set to 500 rpm. The resulting chromatogram is shown in Figure 4 (Top), the peaks are identified in Table 1. HSSE results in a much more complex chromatogram than direct thermal extraction. Many of the compounds identified in the HSSE chromatogram are associated with the fragrance used in this product.

## GERSTEL AppNote 145

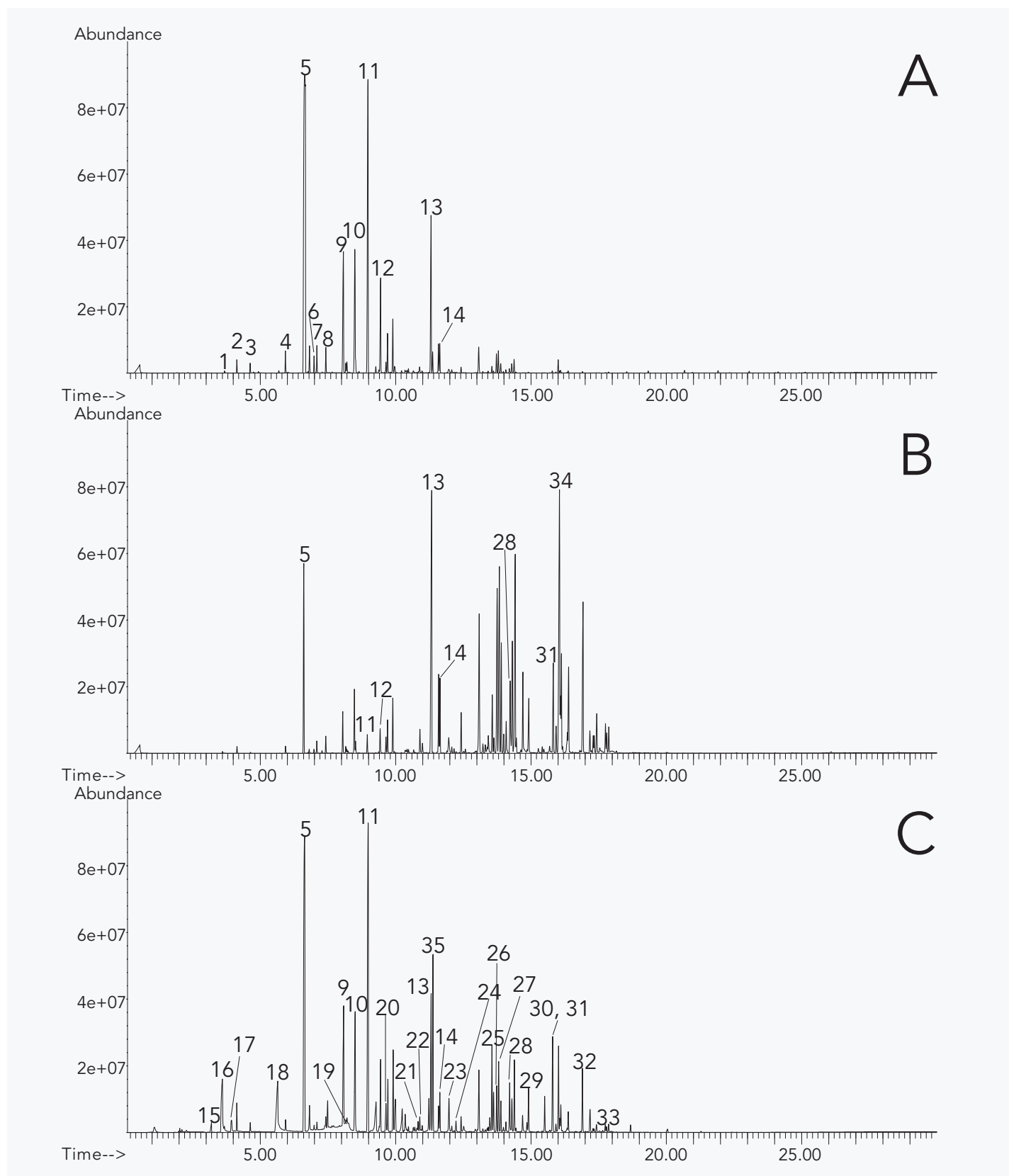


Figure 4: Stacked view of total ion chromatograms obtained from HSSE- (A), SBSE- (B) and DHS- (C) analysis of the sample.

## GERSTEL AppNote 145

**Table 1:** Peak identities for figure 4.

Peak #	Identification
1	2-Methylbutanoic acid, methyl ester
2	Hexamethylcyclotrisiloxane
3	2-Methylbutanoic acid, ethyl ester
4	2-Methylpentanoic acid, methyl ester
5	Octamethylcyclotetrasiloxane
6	3-Hexen-1-ol, acetate
7	Hexyl acetate
8	Limonene
9	2,6-Dimethyl-7-octen-2-ol
10	3,6-Dimethyl-3-octanol
11	Decamethylcyclopentasiloxane
12	Benzyl acetate
13	4-t-Butylcyclohexyl acetate
14	2-Acetoxy-2-benzylpropane
15	Acetic Acid
16	Trimethylfluorosilane
17	1,2-Propanediol
18	Methoxyphenyl oxime
19	1,2,3-Propanetriol
20	2-Methyl-3(2H)-isothiazolone
21	$\gamma$ -Octalactone
22	4-Methoxybenzaldehyde
23	Piperonal
24	$\gamma$ -Nonalactone
25	Tetradecamethylcycloheptasiloxane
26	$\gamma$ -Decalactone
27	Beta-Ionone
28	Phenoxyethyl isobutyrate
29	$\gamma$ -Undecalactone
30	Ethyl citrate
31	Dihydromethyljasmonate
32	2-(Phenylmethylene)-octanol
33	Hexadecadienal isomers
34	2,4-di-t-Amylphenol
35	Dodecamethylcyclohexasiloxane

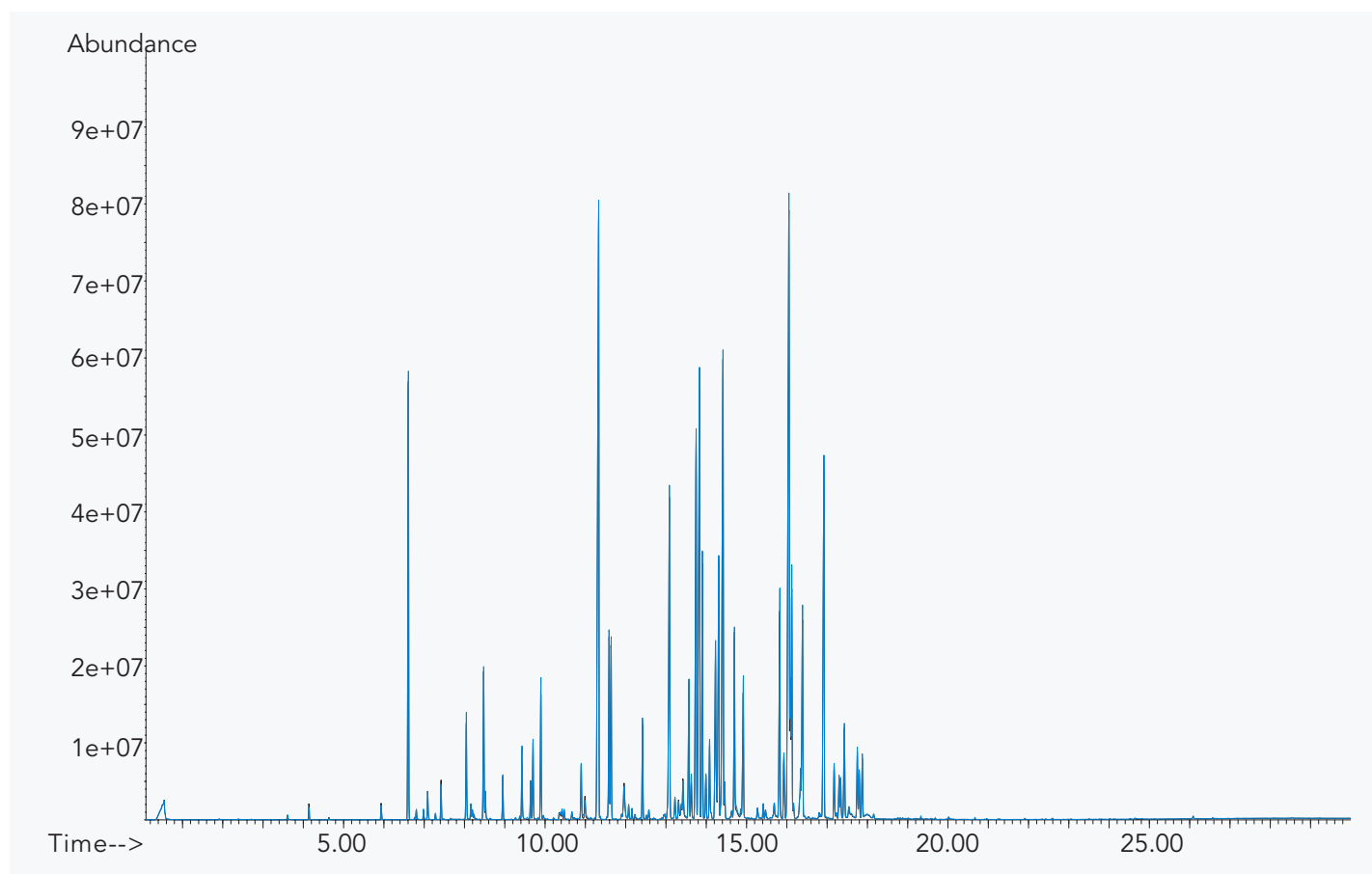
*Twister SBSE*

Stir bar sorptive extraction (SBSE) relies on the GERSTEL Twister, a PDMS coated magnetic stir bar that is used to extract analytes from a liquid sample into the PDMS phase while stirring the sample. Following the extraction step, the Twister is removed, rinsed with water, dried, and the analytes are transferred to the GC/MS system using thermal desorption. The recovery of analytes from aqueous solutions can be predicted based on their octanol/water partition coefficients.

For this study, approximately 60 mg of sample was diluted with 10 mL water. A Twister stir bar was added and the sample extracted at room temperature for 1 hour at 1200 rpm. The stir bar was thermally desorbed in the TDU and the analytes transferred to the GC/MS. The resulting chromatogram is shown in figure 4 (B). Compared with HSSE, the SBSE technique results in much better recovery of semi-volatile organic compounds (SVOCs), as one would expect. Among the SVOCs seen in the SBSE chromatogram are long chain alcohols and substituted phenols. In figure 5, an overlay of 2 replicates is shown, illustrating the excellent precision, which can be achieved using the SBSE technique.

The heated zone of the TDU is large enough to accommodate 2 Twisters in each TDU liner. This means that Twisters from HSSE and SBSE of the same sample can be combined in a single GC/MS run to give a more complete picture of the composition of the sample across the volatility range from VOC to SVOC. In the GERSTEL MAESTRO software, multi-desorption mode can be selected and multiple tubes desorbed for a single GC/MS run, resulting in enhanced sensitivity. The same or two different sets of desorption conditions can be used.

## GERSTEL AppNote 145



**Figure 5:** Overlay chromatograms from two individual SBSE extractions.

#### Dynamic Headspace Analysis

Dynamic Headspace (DHS) is a technique used to extract and concentrate VOCs from liquid or solid samples placed in standard headspace vials. The headspace above the sample is purged and analytes are concentrated on a replaceable, user selectable adsorbent-filled trap. Analytes are subsequently introduced into the GC/MS system by thermal desorption of the trap in a GERSTEL TDU.

Tenax-TA® was the adsorbent material chosen for this study. Carboxen® and Carbotrap® filled tubes are also available. The Full Evaporation Technique (FET[1,2]) combined with DHS was used for the analysis: A small amount of liquid sample is placed in a sealed headspace vial. The vial is then heated above the boiling point of the solvent, which is fully evaporated. This means that volatile compounds are quantitatively transferred to the vapor phase independent of their solubility in the liquid phase since there is no liquid phase left. The headspace of the vial is then purged with inert gas and analytes are swept onto an adsorbent trap. Non-vol-

atile residue is left at the bottom of the vial and discarded with the used vial when the extraction has been completed.

In figure 4 (C) a chromatogram resulting from a FET-DHS extraction of the sample is shown. Compared with HSSE and SBSE, DHS results in better sensitivity for volatile compounds, especially for highly water soluble VOCs. As an example, the methoxyphenyloxime peak at retention time 3.6 minutes is clearly larger in the FET-DHS chromatogram. The SVOC peaks, however, are not as large as those seen in the SBSE chromatogram, but late eluters, such as the hexadecadienal isomers at retention time 17.5-18.0 minutes, are clearly identified. Another peak of interest in the FET-DHS-GC/MS chromatogram at retention time 9.6 minutes is methylisothiazolinone. This compound is listed in the ingredients for the product and is typically added as a biocide. The octanol/water partition coefficient for this compound is -0.83, which means it is highly soluble in water. It is therefore no surprise that the compound is not found in the SBSE and HSSE chromatograms.



## GERSTEL AppNote 145

### Conclusions

The GERSTEL LabWorks Platform with combined with Agilent GC/MS provides a versatile platform for sample analysis. Several techniques can be applied quickly to the analysis of a sample in order to provide the necessary data for R&D, quality control, troubleshooting, or competitive analysis. The addition of a DHS or PYRO module can provide additional, complimentary data. With the appropriate use of standards, any of the above techniques can be used for quantitative analysis.

### References

- [1] M. Markelov, J.P. Guzowski, Jr., *Analytica Chimica Acta*, 276 (1993) 235-245
- [2] M. Markelov, O.A. Bershevits, *Analytica Chimica Acta*, 432 (2001) 213-227